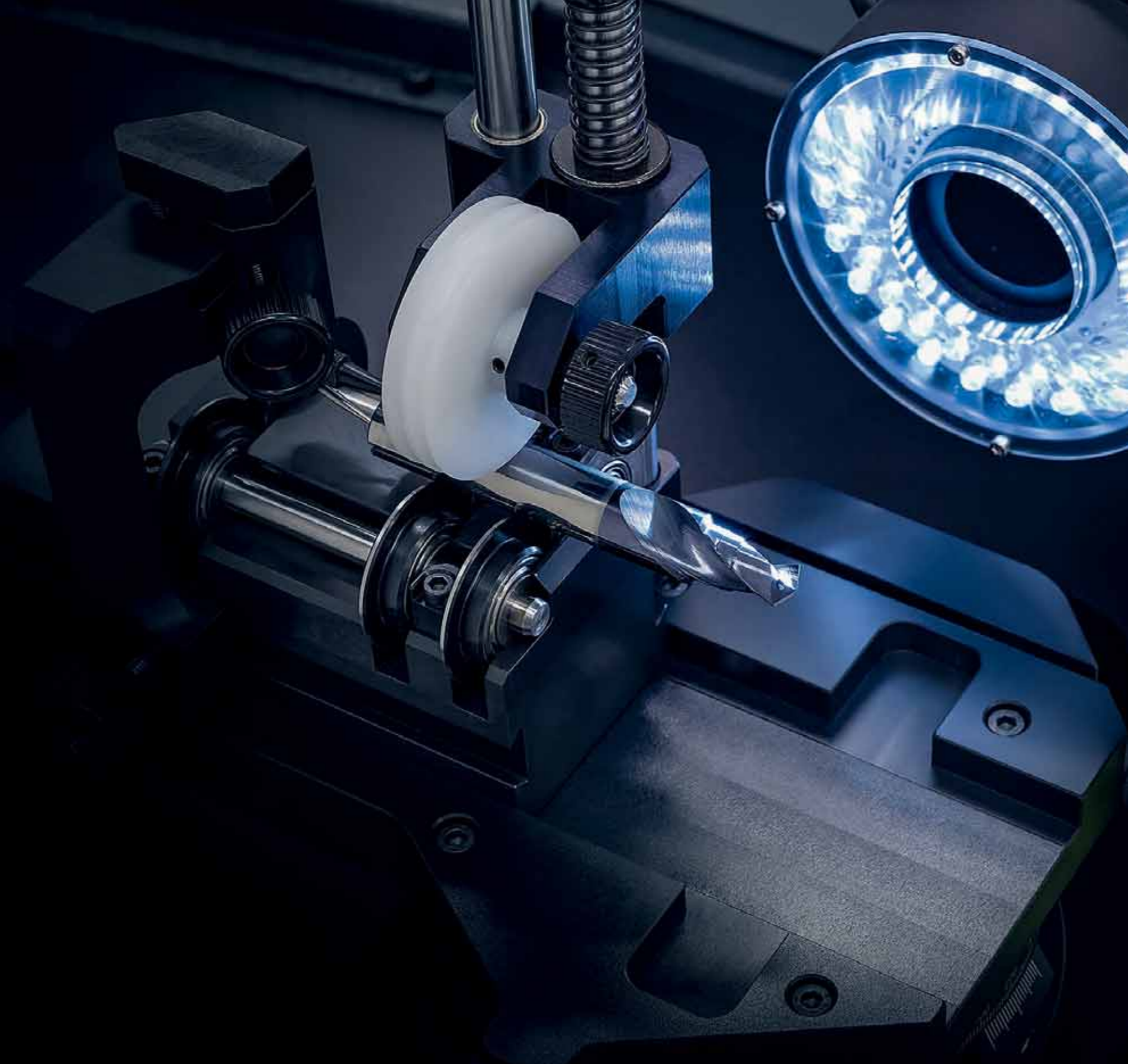




Flexible Compact Solutions for Tool Inspection

pomBasic | pomBasicMicro



The Basis for Efficient Processes

Do you want to speed up your work processes? Then take the advantage of tool measuring and inspecting! With their compact design, the ZOLLER inspection machines »pomBasic« and »pomBasicMicro« can be placed anywhere in the production area — for example directly next to the CNC grinding machine, in incoming tool inspection, or in final inspection department. This saves you unnecessary travel to the measuring room, and you will profit from efficient processes and precise results in record time.

»pomBasic«

»pomBasicMicro«

»pomBasic«

Insert the tool, start, inspect, and done! It's so easy and quick with the »pomBasic« and »pomBasicMicro« to test almost all round shank tools. With the automatic edge detection, a high level of accuracy is guaranteed...



»pomBasic«

»pomBasicMicro«

...Assistant-controlled measuring processes, macros for automated measuring sequences and test protocols at the push of a button ensure efficient production processes and maximum quality.



»pomBasicMicro«

Highlights of »pomBasic« and »pomBasicMicro«:



Incident light
measurement



Non-contact
measurement



Ergonomic
180°



Transmitted
light measure-
ment*



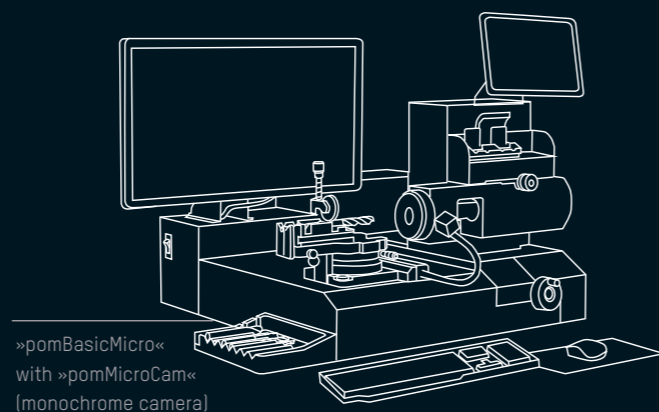
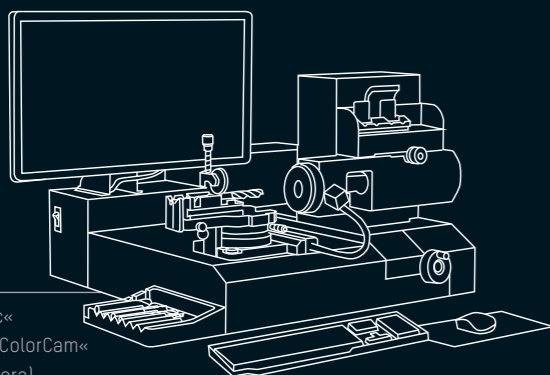
Central ZOLLER
tool database

* Optional

All-around Sophisticated and Compact Design

Technical Data

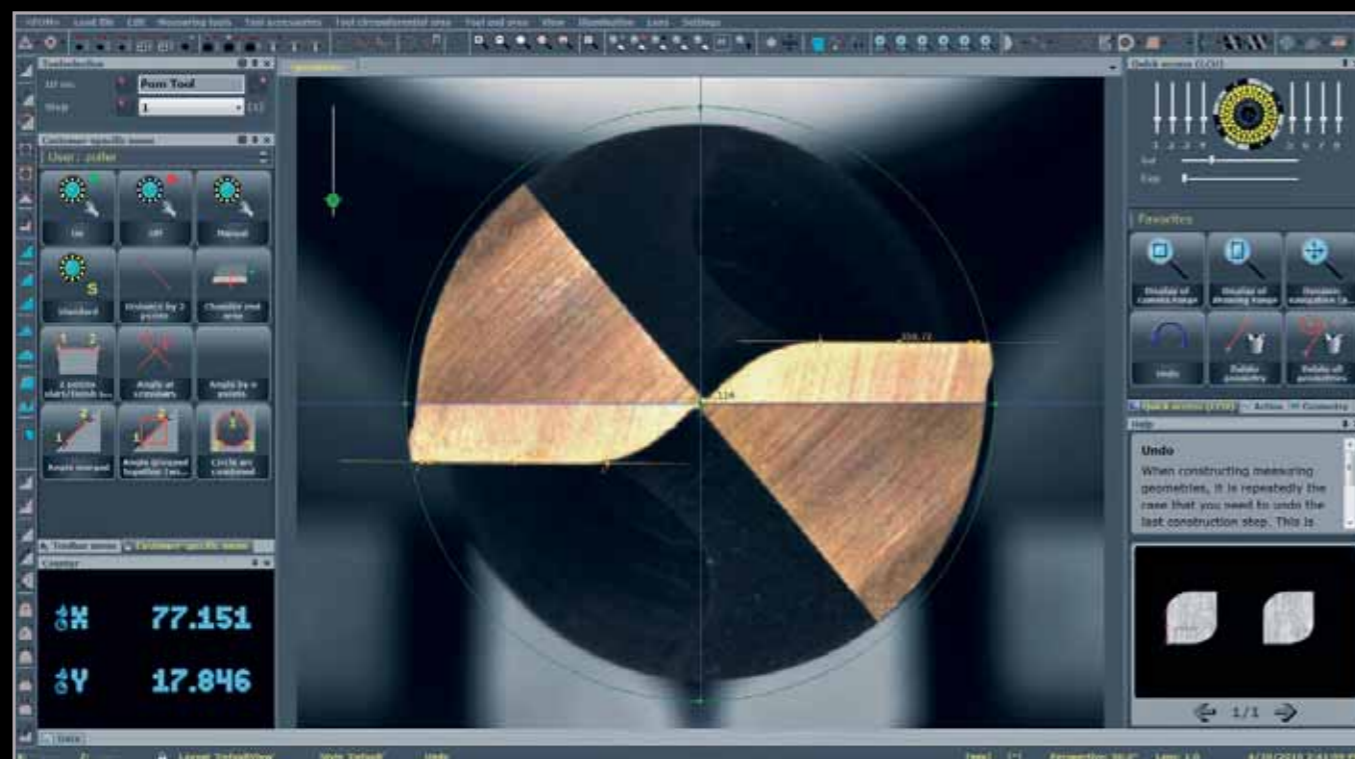
	X-axis	Y-axis	Z-axis (Incident Light Camera)	Measurable and Clampable Shank Diameter	Zoom Lens	Working Distance	Measuring Window W x H
»pomBasic«	190 mm	±50 mm	55 mm	0.5–50 mm (depending on tool holder)	Video microscope system color with 6.5-times optical enlargement	90 mm	3 mm x 2.5 mm – 20 mm x 16 mm
»pomBasicMicro«	190 mm	±50 mm	55 mm	0.5–50 mm (depending on tool holder)	Video microscope system monochrome with 12-times optical enlargement	50 mm	0.6 mm x 0.5 mm – 7 mm x 5.8 mm



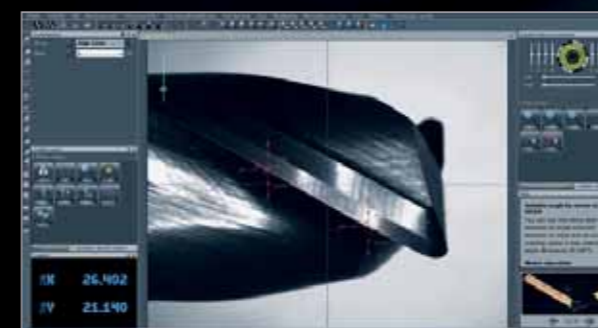
- Typically ZOLLER — maximum precision and user friendly
- Universal design with easy, quick, and intuitive controls
- Ergonomic, compact, and stable construction with high-quality brand components
- Automatic light controls for optimum and high-contrast illumination
- Manual, non-contact measurements, within seconds, and with direct output of results (PDF reports, Excel file, etc.)
- Manual axis adjustment (Z, X, and Y) with an axis resolution of 0.001 mm
- Designed for the shop floor directly next to the CNC grinding machine —or for use in the measuring room

Simply Better Inspection with ZOLLER »pomSoft«

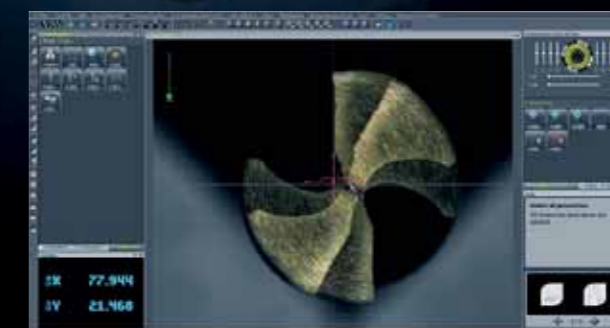
Whether in incident light or transmitted light, the ZOLLER »pomBasic« and »pomBasicMicro« with »pomSoft«, ensures precise results quickly and easily. The software for process-oriented testing is based on the globally proven ZOLLER image processing »pilot 3.0«. It is fitted with numerous evaluation algorithms for grinding and sharpening companies, as well as for tool manufacturers. In addition, every function can be set up and saved individually for the respective inspection tasks and tool versions in the customer-specific menu. This makes its use user-independent and clear, without great training costs.



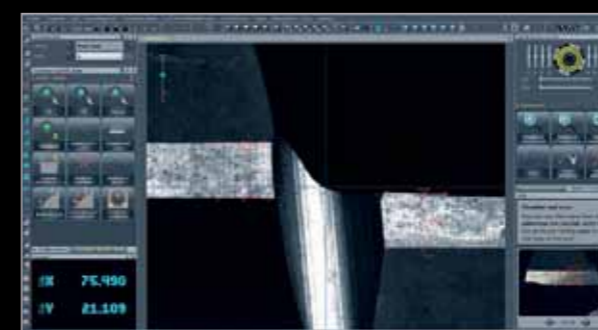
Intuitive controls with a clear software interface for quick and easy testing at the push of a button — and without great training costs.



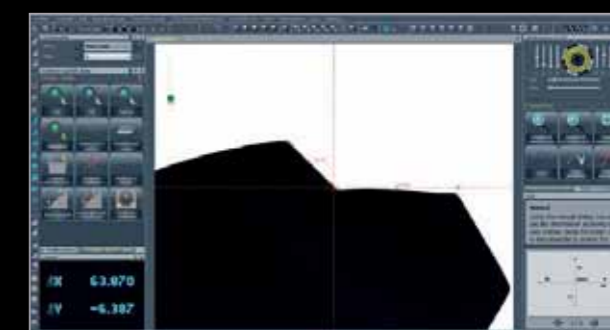
Inspects the tool end and circumferential area (see above) in a matter of seconds, including an automatic and user-independent edge detection for confident and reproducible results.



Direct comparison of the target and actual contour by overlaying saved master images with the live image of the new tool.



High-resolution camera systems with large zoom levels facilitate the analysis of the smallest surface details or the μm -accurate inspection of micro-geometries.

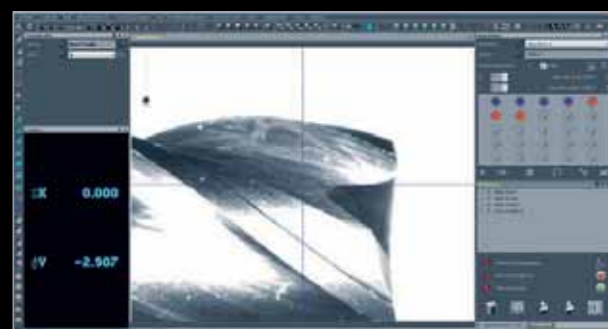
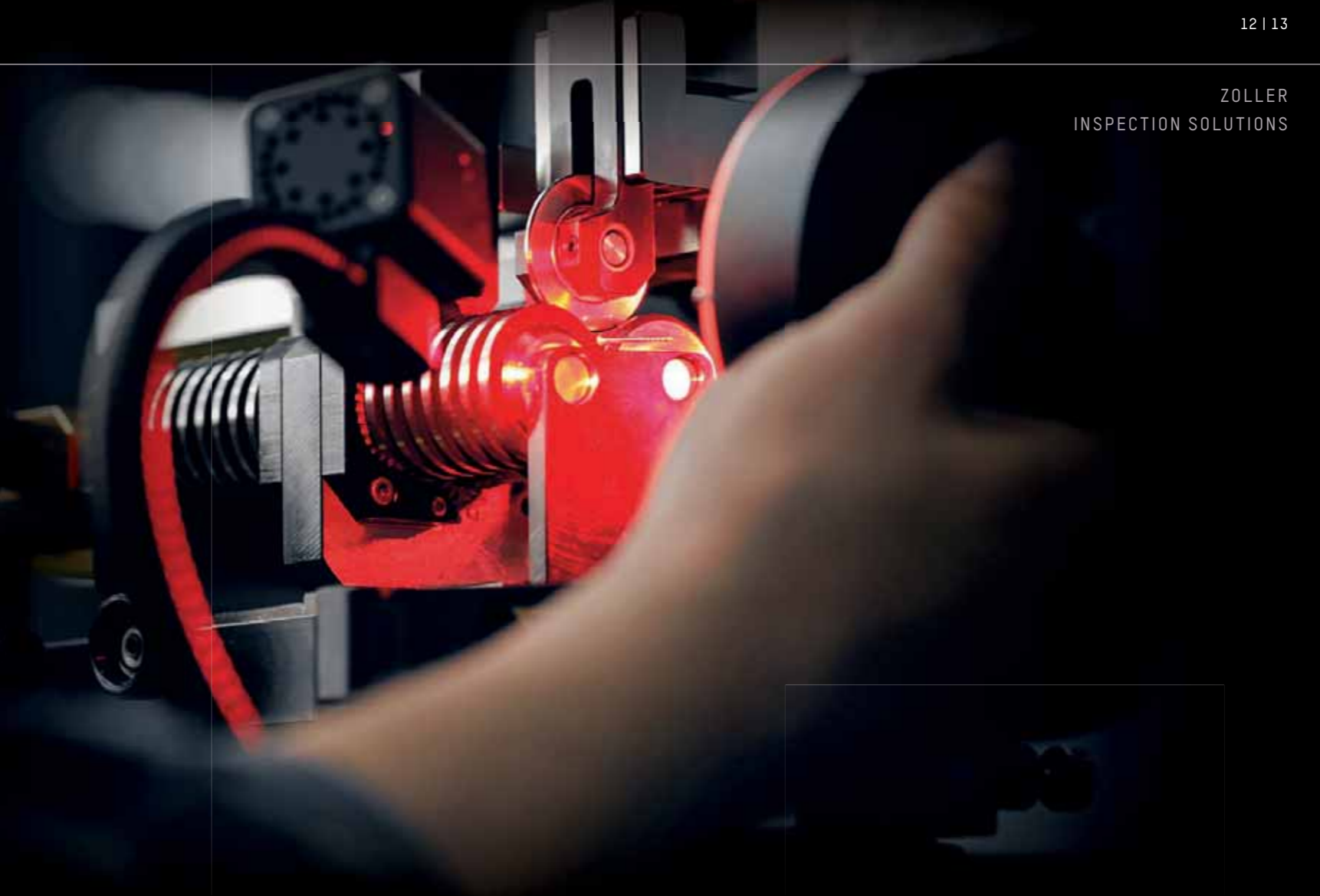


Fast and μm -precise transmitted light measurements in the circumferential area through the optional diffuser (LED flat light).

Guaranteed Sharp — »reGrind«

With the new ZOLLER »reGrind« software module, »pomBasic« and »pomBasicMicro« become electronic caliper gages for all cutting tool wear measurements.

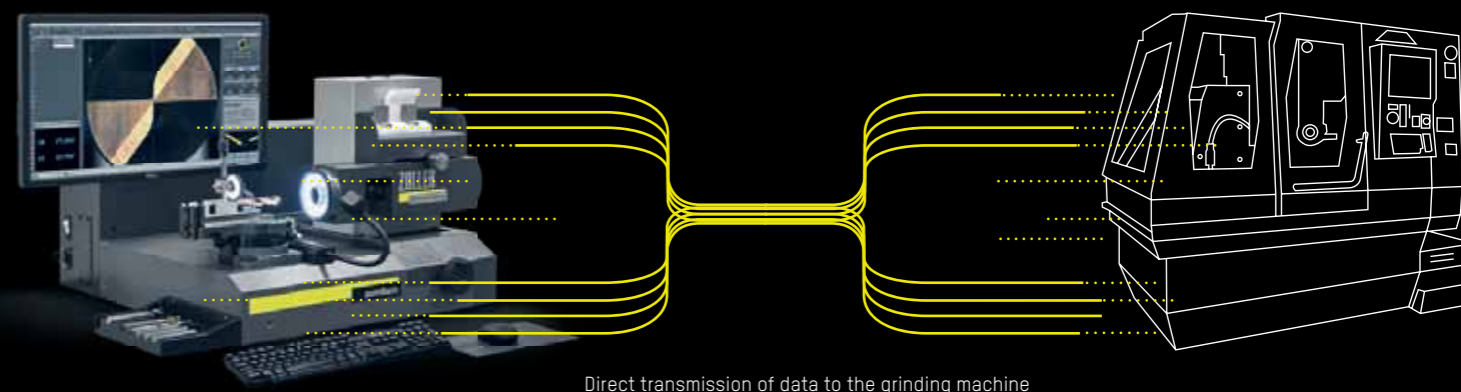
Economic re-sharpening is very easy with »reGrind«. The wear features are recorded during the measurements with »pomBasic« or »pomBasicMicro« and are assigned to the corresponding virtual pallet place. They form the geometric basis in the subsequent sharpening process. Before grinding, the data is transmitted via post processor directly and without error to the grinding machine. The result: Re-grinding is only performed in size of the actual wear, time and costs are saved by preparing pallets operator independent beforehand, while the tools are preserved.



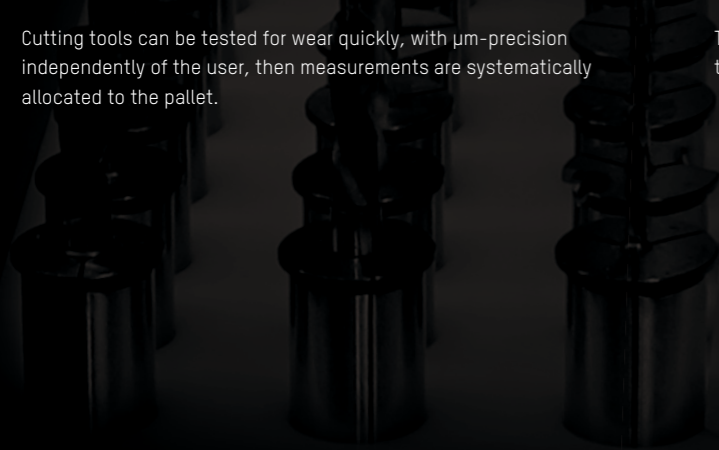
Cutting tools can be tested for wear quickly, with μm -precision independently of the user, then measurements are systematically allocated to the pallet.



The measured wear features are transmitted control-specifically to the respective grinding machine at the push of a button.



Direct transmission of data to the grinding machine



Insert, Tighten and You're Ready to Go.

Ergonomic and quickly changeable
Easiest alignment and positioning
Stable construction for measuring processes

For »pomBasic« and »pomBasicMicro« there are besides the universal tool holder special tool fixtures available. Almost every round shank tool can be inserted and measured using these inspection machines.

Shank tools Ø 2-50 mm
(depending on tool holder)



Collet chuck adapter
D32 mm BabyChuck with
additional collet chuck
D0.5 mm – D8 mm*



Premium Reversible Cutting Insert
Holder*



Fixator holder with inner or
outer clamping*



Shank tools Ø 1.5 – 16 mm



Collet chuck »pomRoto«
D1.5 – D16 mm*



»pomPrisma« tool holding fixture* (3 model options), direct clampable
shank diameter: 2 – 50 mm, max. tool length: 300 – 400 mm



»pomRoll« tool holding fixture* directly clampable
shank diameter: 2 – 40 mm, max. tool length: 300 mm



»pomRoll« RP lite tool holding fixture*, directly clampable
shank diameter: 3 – 25 mm, max. tool length: 300 mm



»pomRoto« rotation unit* clampable shank diameter as a result of collet chuck:
1.5 – 16 mm, max. tool length: 400 mm, rotation accuracy: 0.006 mm

*Optional



Swiveling Table

The manual swiveling table enables universal clamping of the various »pomBasic« and »pomBasicMicro« tool holders. Fitted with a 3 x 90° indexing, the circular positioning can be variably adjusted to measure at the OD and the end of the tools (± 120° including nonius). The position is held precisely as a result of the clamping (index position for -90°/0°/+90°). There is an optional table version for very long tools with lengths up to 330 mm.

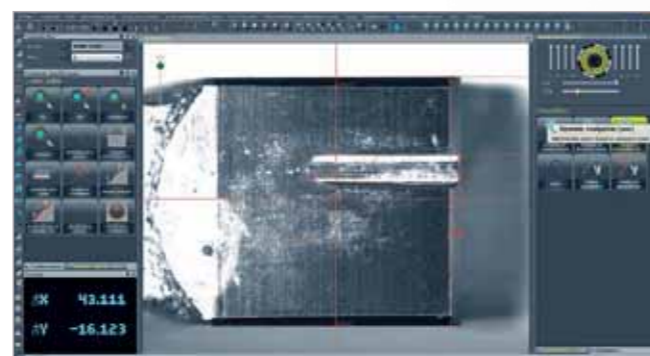
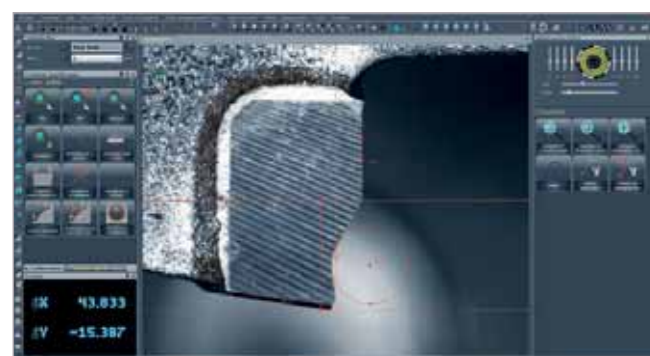
Rotary Encoder (ROD)*

The rotary encoder (ROD) can optionally be integrated into the swiveling table. The angle information is provided digitally in counter mode (C-axis). The angle display allows fast positioning of the table to nominal angle, for example, in relation to the required angle in »pomSoft« image processing.

Attachment holder, adapter and tools not included in the delivery.

Cut Better – with the Saw Blade Holder for »pomBasic«

The modular saw blade holder further expands the application spectrum of »pomBasic«. Blades with a diameter of 150 mm to 600 mm can be clamped with various bushings. A large number of tooth parameters and geometries can be measured axially and radially with »pomSoft« image processing in incident light.



Axial Measurement

Measurable parameters, e.g. in the axial position:
Clearance angle, hook angle, groove shape, groove depth,
cutting length, eccentricity, tooth quality

Radial Measurement

Measurable parameters, e.g. in the radial position:
Tooth quality, blade thickness, clearance angle top / bottom,
tooth width



ZOLLER blade holding fixture for the »pomBasic« inspection machine

Accessories and Options



»pom« Base Table

Dimensionally stable and reliable positioning of the »pomBasic« and »pomBasicMicro« inspection units as a stand workstation. Integrated support plate, plexiglas door for laser color printer, and measurement device control.



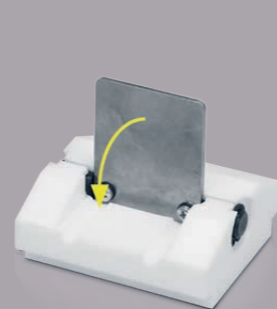
LED Spot (White / Red LEDs)

Dimmable additional lighting consisting of two white (»pomBasic«) or two red (»pomBasicMicro«) spots with CREE LEDs on flexible arms. The CREE True White technology combines maximum energy efficiency, long service life and uniform illumination, so that even the smallest areas along the tool cutting edge can be perfectly illuminated.



Reflector

The reflector increases the contrast of the light during tool incident light measurements. To this end, it reflects the light (LED illumination) from the thermoplastic plate back into the camera system. Furthermore, the reflector has a tool stop (made of stainless steel) so that measurements at a specific point of the tool can be repeated.



Stop

The stop serves to position the tool tip to the spindle center. Repeated measurements of identical tools can be executed.



Diffuser (white/red)

The diffuser enables transmitted light measurement at the radial area OD (Outer Diameter) of the tool. The diffuser (LED flat light) is positioned opposite to the video microscope system. This enables measurement of maximum outer contours, step lengths, point angles, radii etc, without helical influences.

- _ White diffuser for »pomBasic«
- _ Red diffuser for »pomBasicMicro«



Tool / Accessory Tray

The tool / accessory tray enables storage of tools with shank diameters of up to D50 mm. Reduction sleeves for fast tool change can also be stored. It is mounted on the left side of the device base.



Drawing Holder

The drawing holder specially designed by ZOLLER is ideal for displaying drawings in close proximity to the measurement. Magnets and the magnetic ball joint allow drawings, model plates or similar useful items to be held in place easily. It is mounted on the right front side of the inspection unit.



Color Laser Printer

The color laser printer for report and list printing has a memory of 128 MB (upgraded to 640 MB), a printing speed up to 20 pages/minute, a maximum resolution of 1,200 x 1,200 dpi, a universal paper cassette for 250 pages (A4 and smaller), a USB interface, and a network connection. A power supply of 220 V – 230 VAC (Europe) or 110 V – 127 VAC (USA) is required. The printer is also monochrome (b / w) capable.

ZOLLER Service

Faster, more flexible, more operationally reliable – your goal is to achieve maximum efficiency in your production operations. Our goal is to help you with this by providing well-conceived system solutions. We also provide comprehensive service and support that may involve an on-site consultation or development of made-to-measure solutions to suit individual requirements. Choosing ZOLLER means choosing superlative products and unique manufacturing expertise. Needless to say, you have access at all times to experts that will answer your questions – for the entire lifetime of your ZOLLER products. Use ZOLLER know-how to optimize your production operations.



Alexander Zoller | Christoph Zoller



ZOLLER Solutions

From us, you get more than superior products. You obtain individual system solutions for every aspect of your tools. To achieve this for you, we combine hardware, software, and service support. All from a single source. All for your success. We call that ZOLLER Solutions.

At Home in Germany – at Your Call Worldwide

GERMANY

HEAD OFFICE

E. Zoller GmbH & Co. KG
Tool Presetters and
Measuring Machines
Gottlieb-Daimler-Strasse 19
D-74385 Pleidelsheim
Tel: +49 7144 8970-0
Fax: +49 7144 8060807
post@zoller.info
www.zoller.info

ZOLLER NORTH

E. Zoller GmbH & Co. KG
Service & Sales Center
Wohlenbergstrasse 4 c
D-30179 Hanover
Tel: +49 511 676557-0
Fax: +49 511 676557-14
zollernord@zoller-d.com
www.zoller.info



EUROPE

AUSTRIA

ZOLLER Austria GmbH
Tool presetters and measuring machines
Haydnstraße 2
A-4910 Ried im Innkreis
Tel: +43 7752 87725-0
Fax: +43 7752 87726
office@zoller-a.at | www.zoller-a.at

FRANCE

ZOLLER S. à. r. l.
11, rue du Tanin
F-67380 Lingolsheim
Tel: +33 3 8878 5959
Fax: +33 3 8878 0004
info@zoller.fr | www.zoller.fr

SPAIN + PORTUGAL

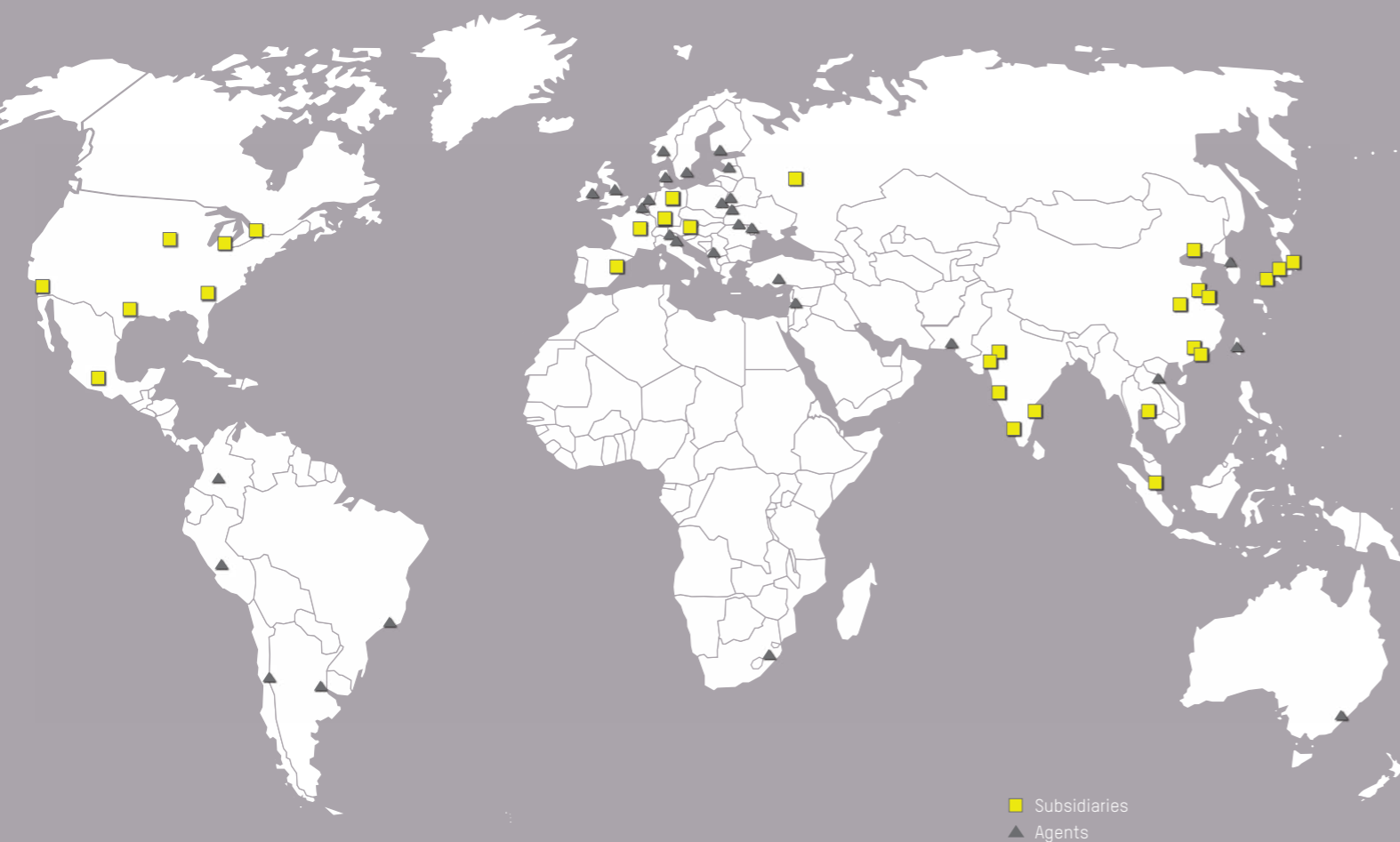
ZOLLER Ibérica S.L.
Balmes 186 2º 1ª
E-08006 Barcelona
Tel: +34 932 156 702
Fax: +34 935 198 014
correo@zoller.info | www.zoller.info

RUSSIA

LLC ZOLLER Russia
Chaussee Entuziastov,
56 build.32
RU-111123 Moscow, Russia
Tel: +7 495 22140-58
Fax: +7 495 22140-91
info@zoller-ru.com | www.zoller-ru.com

AGENTS

Belarus, Belgium, Bulgaria, Croatia,
Czech Republic, Denmark, Estonia,
Finland, Hungary, Ireland, Israel, Italy,
Latvia, Lithuania, Netherlands, Norway,
Poland, Romania, Slovakia, Slovenia,
Southern Tyrol, Sweden, Switzerland,
Turkey, UK, Ukraine, Argentina, Brazil,
Chile, Colombia, Peru, South Africa,
Australia, Korea, Pakistan, Taiwan,
Vietnam



■ Subsidiaries
▲ Agents

OVERSEAS

USA

ZOLLER Inc.
North America Headquarter
3753 Plaza Drive
Ann Arbor, MI 48108 USA
Tel: +1 734 332 4851
Fax: +1 734 332 4852
sales@zoller-usa.com | www.zoller-usa.com

ZOLLER Inc. Pacific
3882 Del Amo Blvd., Suite 603
Torrance, CA 90503 USA
Tel: +1 424 247 0180
sales@zoller-usa.com | www.zoller-usa.com

CANADA

ZOLLER Canada
5659 McAdam Road, Unit A2
CAN-L4Z 1N9 Mississauga, ON
Tel: +1 905 712 0100
Fax: +1 905 712 1623
sales@zoller-usa.com | www.zoller-usa.com

MEXICO

ZOLLER Mexico
Calle 53, LT-24, C-21
Bosques de la Hacienda
MEX-C.P. 54715 Cuautitlan Izcalli
Estado de México
Tel: +52 55 5817 4654
Fax: +52 55 5817 4565
sales@zoller-usa.com | www.zoller-usa.com

INDIA

ZOLLER India Private Ltd.
Plot No. RM 104, 'G' Block
Sanjeevani Complex, Shahu Nagar,
Near KSB Chowk, Chinchwad,
Pune 411019 Maharashtra, India
Tel: +91 20 2749 6118
Fax: +91 20 2749 6114
info@zoller-in.com | www.zoller-in.com

CHINA

ZOLLER Shanghai, Ltd.
Asia Pacific Regional Headquarter
No. 1588 ZhuanXing Road
Xin Zhuang Industry Park
Min Hang District
RC-201108 Shanghai
Tel: +86 21 3407 3978
Fax: +86 21 6442 2622
info@zoller-cn.com | www.zoller-cn.com

HONG KONG

ZOLLER Asia Pacific, Ltd.
10A Seapower Industrial Centre
177 Hoi Bun Road, Kwun Tong
RC-Kowloon, Hong Kong
Tel: +86 21 3407 3978
Fax: +86 21 6442 2622
info@zoller-cn.com | www.zoller-cn.com

JAPAN

ZOLLER Japan K. K.
5-14, Kawagisi-Cho,
Suita-Shi
JP-564-0037 Osaka, Japan
Tel: +81 6 6170 2355
Fax: +81 6 6381 1310
info@zoller-jp.com | www.zoller-jp.com

THAILAND

ZOLLER Singapore Pte. Ltd.
65/26 Moo 4 Don Hua Roh
Muangchonburi Chonburi
TH-20000 Thailand
Tel: +66 38149756
Fax: +66 38149757
info@zoller-in.com | www.zoller-in.com

INDONESIA

ZOLLER Singapore Pte. Ltd.
(Indonesia Representative Office)
Alam Sutera Town Centre Block 10 C No. 15,
Jl. Boulevard Alam Sutera
ID-Serpong – Tangerang 15325, Indonesia
Tel: +62 29211 445
Fax: +62 29211 445
info@zoller-in.com | www.zoller-in.com

ZOLLER

solutions

PRESETTING SOLUTIONS

presetting & measuring

SOFTWARE SOLUTIONS

managing tools

INSPECTION SOLUTIONS

inspection & measuring

BUSINESS SOLUTIONS

from A-Z

ZOLLER Solutions are synonymous with comprehensive optimization of your manufacturing operations. ZOLLER combines hardware, software and services to customized system solutions to improve quality, efficiency, and productivity. As a ZOLLER customer you benefit not only from our know-how as market leader in the field of tool measurement technology, but equally from our claim as a family-run business, guaranteeing you sustainable competitive advantages and thus making a measurable contribution to your success.

Subject to technical modifications. The depicted machines may include options, accessories, and control variants. BRPB.01-EN 08/2016
Concept & design: www.absicht.ag



www.zoller.info



»pomBasic«



»pomBasicMicro«

E. Zoller GmbH & Co. KG | Tool presetter and measuring machines
Gottlieb-Daimler-Straße 19 | D-74385 Pleidelsheim
Tel: +49 7144 8970-0 | Fax: +49 7144 8060-807
post@zoller.info

ZOLLER
expect great measures®