

## Hydraulic chucks

### Hydraulic chucks MAS-BT

#### Catalog no. 78221

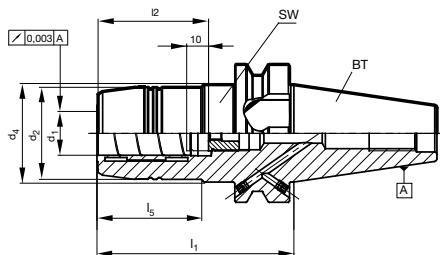
##### Product information

- balancing quality: G6.3 / 15,000 rev./min
- axial length setting
- for tool shank tolerance h6
- suitable for tools with internal cooling
- MAS-BT to JIS B 6339

##### Scope of delivery

- incl. adjustment screw
- incl. hexagon chuck key
- order pull studs separately

Standard	Stock std.
Shank	MAS-BT
Discount group	147



BT	Form	for shank Ø d1 mm	d2 mm	d4 mm	l1 mm	l2 mm	l5 mm	SW	kg	Code no.
40	JD/JF	6.000	26.000	44.500	90.00	37.00	43.00	5.00	1.50	6.040
40	JD/JF	8.000	28.000	44.500	90.00	37.00	44.50	5.00	1.50	8.040
40	JD/JF	10.000	30.000	44.500	90.00	41.00	44.50	5.00	1.50	10.040
40	JD/JF	12.000	32.000	44.500	90.00	46.00	44.50	5.00	1.50	12.040
40	JD/JF	14.000	34.000	44.500	90.00	46.00	44.50	5.00	1.50	14.040
40	JD/JF	16.000	38.000	44.500	90.00	49.00	47.50	5.00	1.50	16.040
40	JD/JF	18.000	40.000	44.500	90.00	49.00	47.50	5.00	1.50	18.040
40	JD/JF	20.000	49.500	49.500	72.50	51.00		5.00	1.50	20.040
40	JD/JF	20.000	42.000	44.500	90.00	51.00	47.50	6.00	1.50	20.140
50	JD/JF	12.000	32.000	44.500	90.00	46.00	34.00	5.00	4.00	12.050
50	JD/JF	20.000	42.000	44.500	90.00	51.00	34.00	5.00	4.00	20.050
50	JD/JF	32.000	72.000	72.000	90.00	61.00		6.00	4.00	32.050